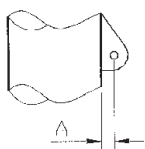
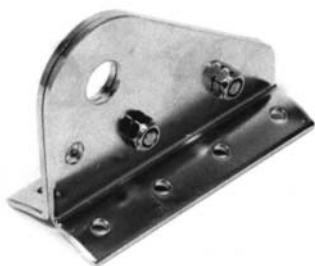


► FERRURE DE BAS ÉTAI OU ÉTAI LARGABLE / BABY STAY OR INNER FORESTAY ATTACHMENT



2004



31009201074 Ferrure interne en 2 parties pour profils I 137 à NG 51 (percé à 12,5 mm).
Internal tang in 2 pieces for profiles I 137 to NG 51
A = 16 mm
Câble / Wire Ø 6 maxi.
29002248140 x 6 Rivets inox / *Stainless rivets.*

31009201104 Ferrure interne en 2 parties pour profils NG60 à NG105 (percé à 14,5 mm).
Internal tang in 2 pieces for profiles NG60 to NG105
A = 35 mm
Câble / Wire Ø 10 maxi.
29002248180 x 8 rivets inox / *Stainless rivets.*

| | | |
|------------------------|----------------------------|-------------|
| | 31009101074 31009201074 | 31009201104 |
| Entaille Cut length | 76 x 6 mm | 102 x 8 mm |

► BOÎTES A RÉA / SHEAVE BOXES



D



C



B



A

| REPERE | CODE REF. | Ø TEXTILE MAXI Ø BOLT ROPE MAXI | REA SHEAVE | RIVETS RIVETS | ENTAILLE CUT LENGTH |
|--------|--------------------|------------------------------------|------------|----------------|---------------------|
| A | 48703150007 | 10 mm | NYLON | 2x 29001348150 | 18 x 43 |
| B | 48702HA0008 | 14 mm | ACETAL | 2x 29001348150 | 24 x 70 |
| C | 48701000011 | 16 mm | ACETAL | 2x 29004164180 | 25 x 72 |
| D | 48701000503 | 14 mm | ACETAL | 2x 29004164180 | 34 x 115 |
| D | 48701150071 | 14 mm | DELRIN | 2x 29004164180 | 34 x 115 |

Détails : voir page 103 / *Details : see page 103.*