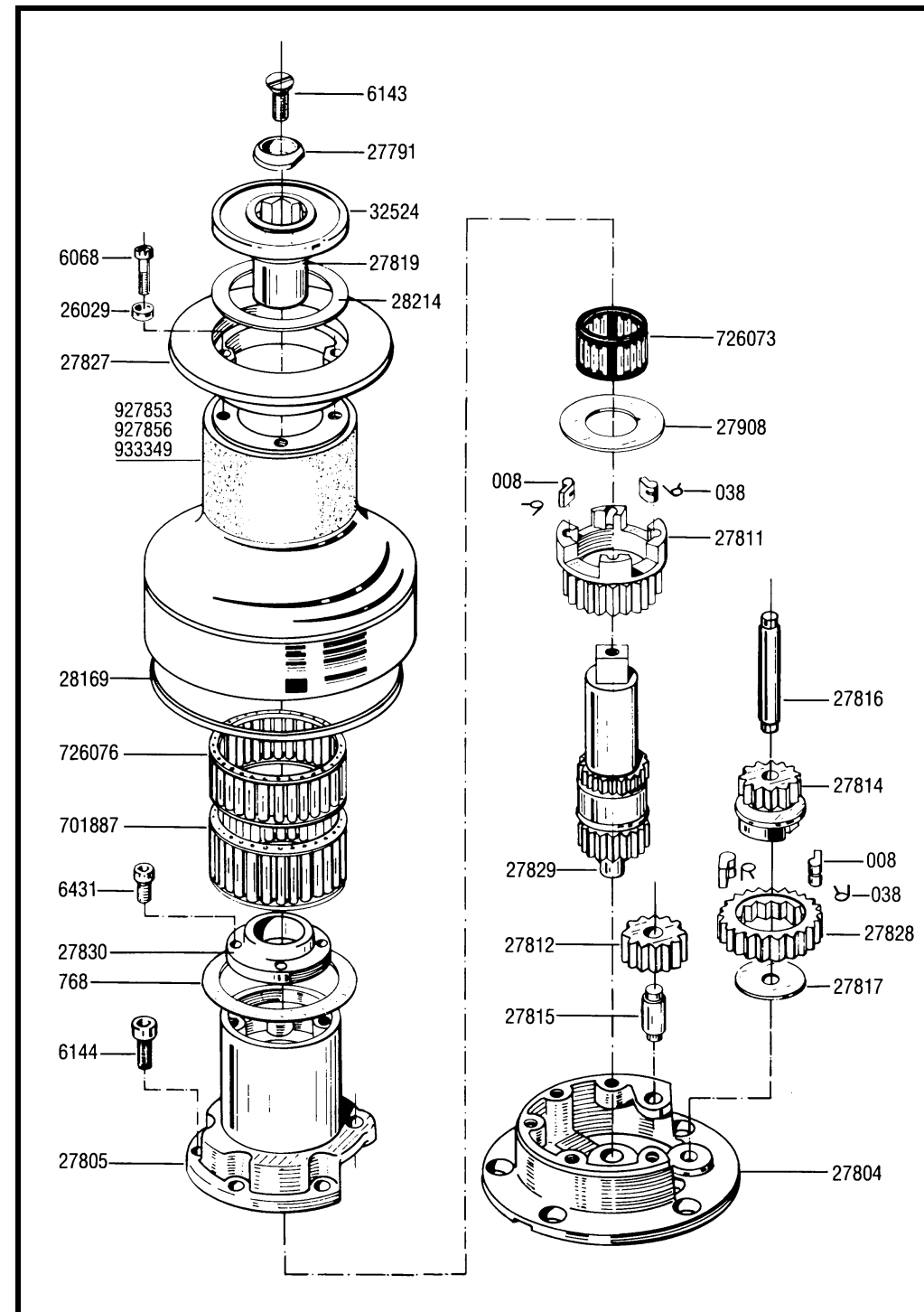


# 44.2

## Two Speed Winch

# HARKEN®



When ordering parts for service, please include a "B" before each number (i.e. B008).

### Tools

#### Tools Required

Allen Wrench (6mm)
Allen Wrench (5mm for Self-Tailing)
Screwdriver
Plastic Head Hammer or Mallet
Small Knife
Brush
Rags
Solvent
Oil
Grease

### Two Speed 44.2

#### Parts List

008	Pawl
038	Pawl Spring
768	Thrust Washer
6068	Screw
6143	Top Screw
6144	Screw
6431	Screw
26029	Plastic Washer
27791	Plastic Washer
27804	Base
27805	Center Stem
27811	Pawl Gear
27812	Gear
27814	Pawl Gear
27815	Gear Shaft
27816	Gear Shaft
27817	Cover Plate
27819	Handle Socket
27827	Drum Crown
27828	Ratchet Gear
27829	Spindle
27830	Stem Cap
27908	Washer
28169	Red Line Ring
28214	Plastic Washer
32524	Top Cap
701887	Bearing
726073	Bearing
726076	Bearing
927853	Aluminum Drum
927856	Chrome Drum
933349	Bronze Drum

#### Suggested Service Kits

BK4512	10 Pawls 008
	10 Springs 038
BK4513	100ml Grease

### Self-Tailing 44.2st

#### Parts List

6081	Screw
6106	Ball (32 required)
6143	Top Screw
6351	Screw
6431	Screw
26731	Roller
27699	Washer
27791	Plastic Washer
27818	Drum Crown
27841	Handle Socket
32373	Guide Ring
32536	Top Cap
33587	Upper Jaw
33588	Lower Jaw
33589	Adjusting Castle
33665	Shimming Washer
33696	Chrome Stripper Arm
33698	Stripper Arm Support
33702	Spring
33751	Spring
33752	Line Peeler
33789	Roller Shaft
33898	Bushing
35328	Bronze Stripper Arm
933696	Chrome Stripper Arm Assembly

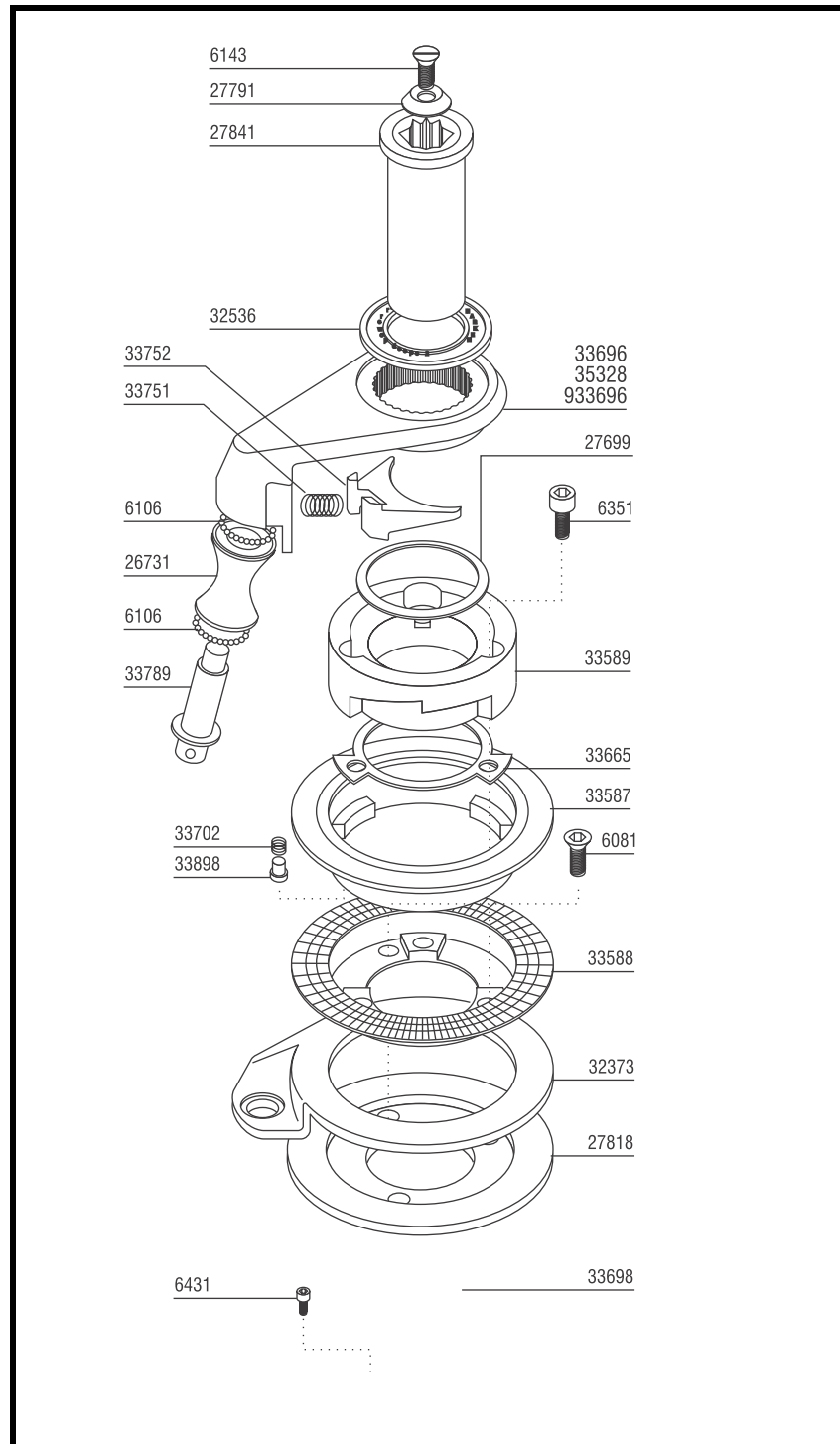
#### Suggested Service Kits

BK4512	10 Pawls 008
	10 Springs 038
BK4513	100ml Grease

# 44.2st

## Two Speed Self-Tailing Winch

### Winch Parts and Service Instructions



**Recommended Service Cycle – Service winch before the sailing season and once during.**

#### Adjusting Self-Tailer

If lines slip in the self-tailer, be sure that there are four or five wraps on the drum, then consider closing the jaws by pressing down on the upper jaw 33587 and turning counterclockwise.

The 33665 shimming washer must be removed to use small line.

The winch is more efficient when the jaw opening matches line size, so close the jaws only if you are using smaller line.

#### Positioning Stripper Arm

Loosen top screw  
Remove handle socket  
Lift stripper arm and position as desired

#### Opening Winch

Remove top screw  
Lift off drum  
On self-tailing winches, lift off stripper arm with drum

#### Servicing Winch

Remove bearings from center stem  
Remove allen screws holding center stem to base  
Remove center stem carefully  
Remove pawls and springs - service as below  
Remove all bearings, gear shafts and gears  
Clean all parts with rags and solvent  
Use a brush to lubricate all gears, gear shafts, bearings, teeth and all moving parts lightly with grease  
Replace pawls and springs and lubricate lightly with oil  
Reassemble and dose winch

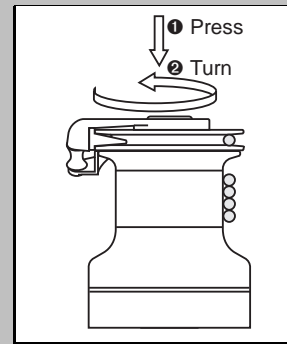
#### Servicing Pawls

Catch spring with knife and hold against pawl  
Lift out pawl  
Clean and check for wear  
Place spring against pawl with straight leg against pawl  
Hold spring closed and slip pawl into pawl socket  
Lubricate pawls using oil

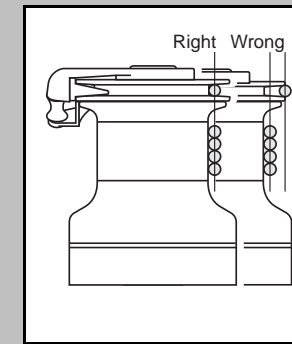
#### Fitting on Boat

Make sure mounting surface is flat  
Check sheet entry angle  
Open winch  
Position winch on deck with drive gear where sheet enters winch drum and mark holes  
Remove winch and drill holes  
Mount using five 5/16" (8mm) flat head machine screws  
Apply bedding compound and bolt winch to boat  
Clean excess bedding compound from base drain holes  
Lubricate and reassemble winch

#### Adjusting Self-Tailer



Press and turn to adjust self-tailer.



Correct opening: Sheet fits completely into jaw and rests against drum.

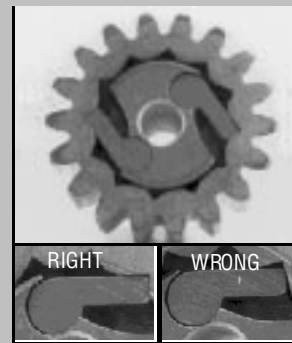
#### Servicing Winch



Clean all parts with solvent.



Grease lightly and spread grease evenly. Use a brush.

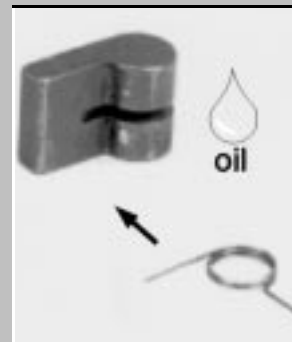


Attention: Ratchet gear mounted backwards will cause winch to slip.

#### Servicing Pawls

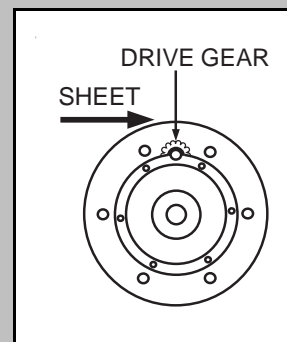


Use a knife to free captive spring.

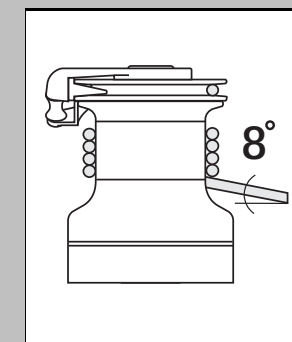


Insert spring with straight leg against pawl. Use oil for lubrication.

#### Fitting on Boat



Position drive gear where sheet enters winch drum.



Sheet entry angle must be at least 8°.

H4604-5/98